

## Movers Beam Notches

There are two types of beam pockets with your project. The first is the normal pockets for the beams that hold up your house and are part of normal basement construction. What is called “the main beam” or the “beam” under your floor in your basement, will fit in to beam pockets in the wall.

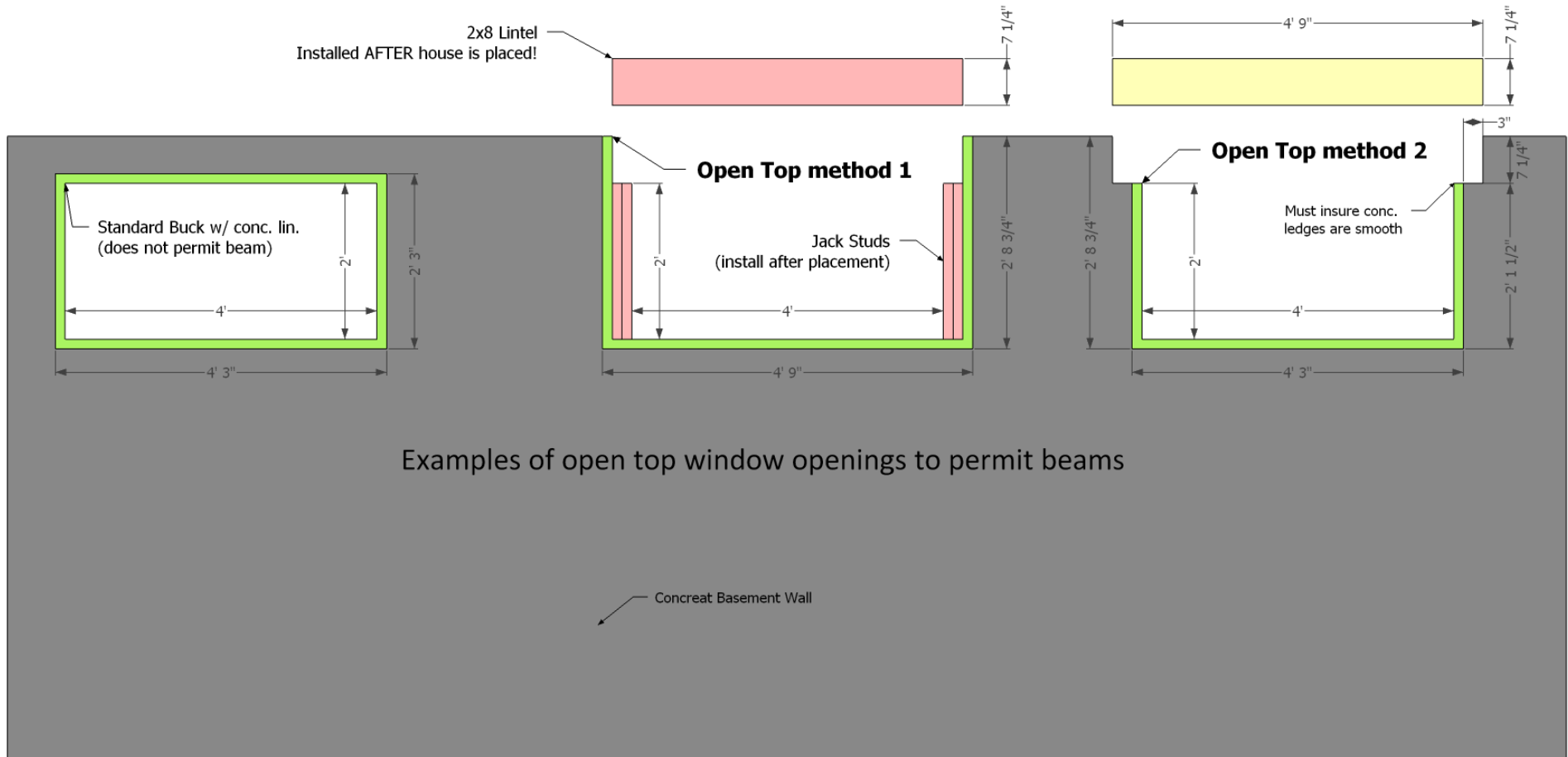
When we move your building, we need another type of pocket or “notch” in the wall that will allow the heavy steel I beams we use to support the house to fit into the concrete walls so we can lower your building and unload it onto the foundation. We tend to use the word “notch” and “pocket” interchangeably which cause some confusion with normal beam pockets. A couple of photo of a basement showing “mover’s beam notches” is below. Note that the openings are usually 24x24”, have no concrete top, and penetrate entirely though the wall.



Below are suggestions for designing different types of openings that will accommodate our mover’s beams. The exact location of the notches is unique to your building. It is important that your basement contractor is aware that these need to be provisioned and that they need to get size and dimensions from us.



**Mover's beam Notches: construction recommendations (24x48" RO example)**

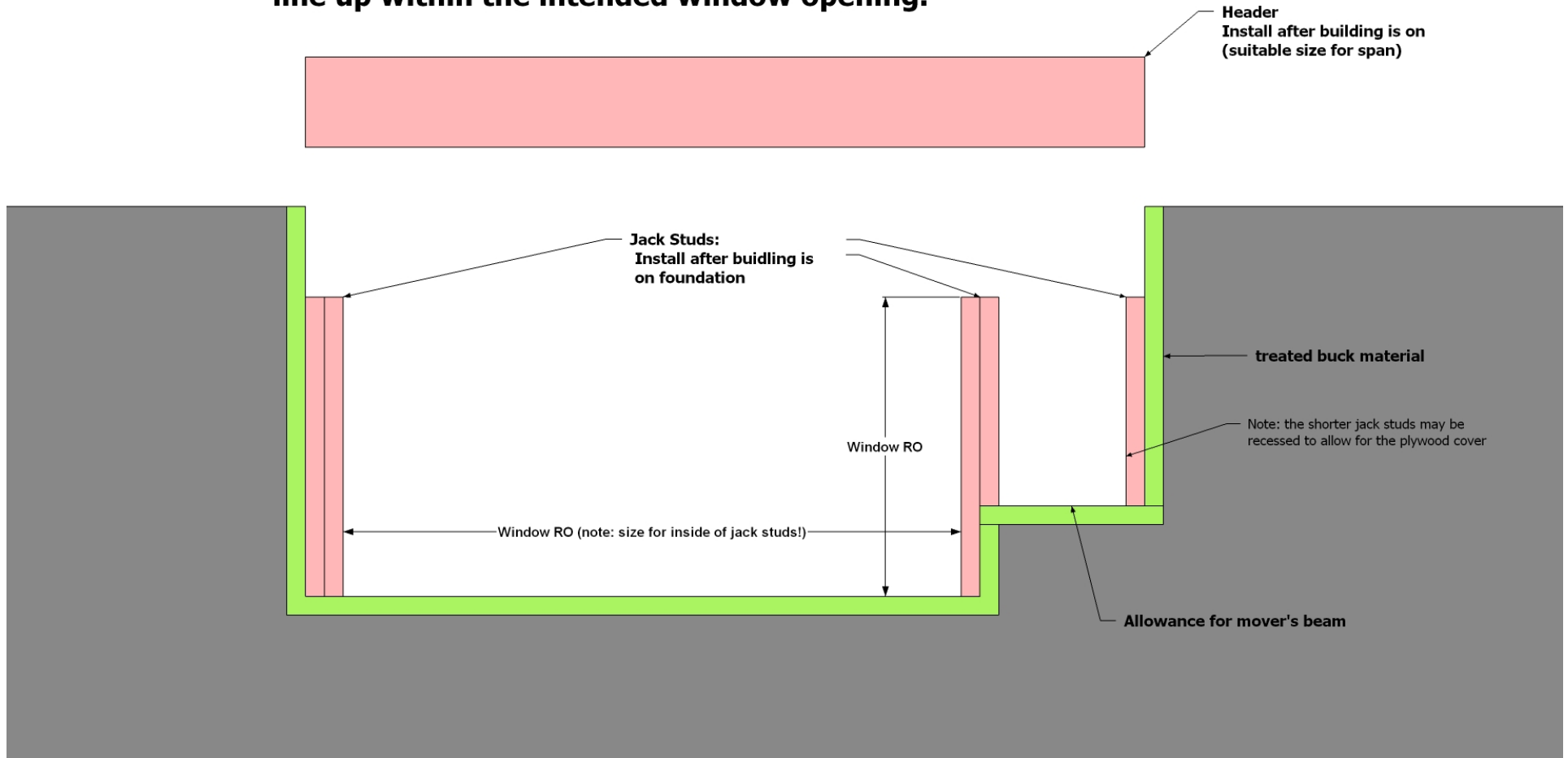


Example based on RO 24x48 window requirement.  
Please check all calculations before constructing.  
Modify measurements based on customer window sizing.  
Please used treated lumber.

Method 1 is the recommended method. Simply make the opening 6" wider then normal and deep enough to allow a suitable header and leave open at top.  
Windows can be placed lower in wall and top can be filled in with framing.  
Make sure beam window requirement fits in window opening. Enlarge opening if beam window requirement only partially fits - fill in as necessary after move on.

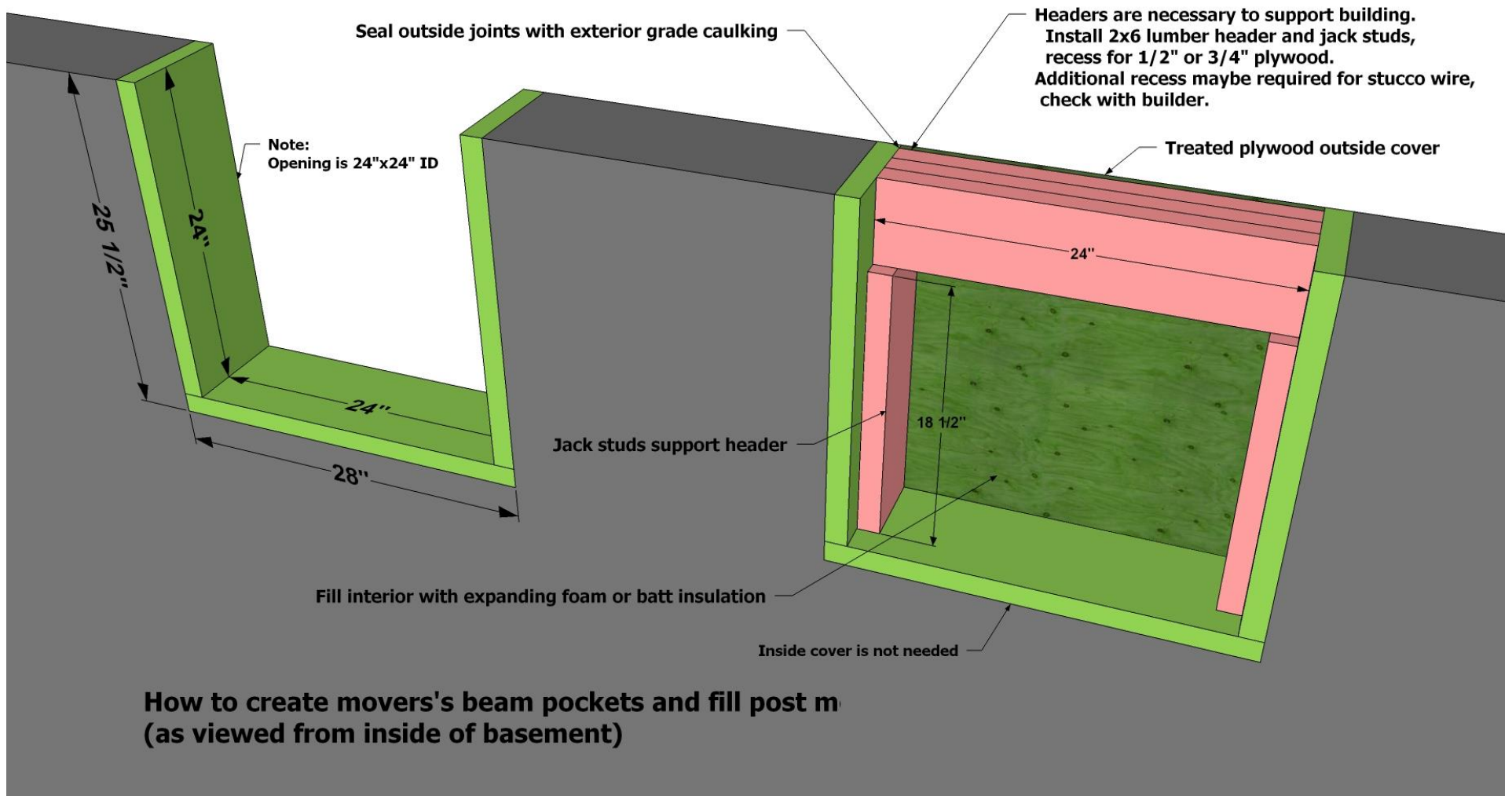


**Example of mover's beam pocket location that doesn't line up within the intended window opening.**



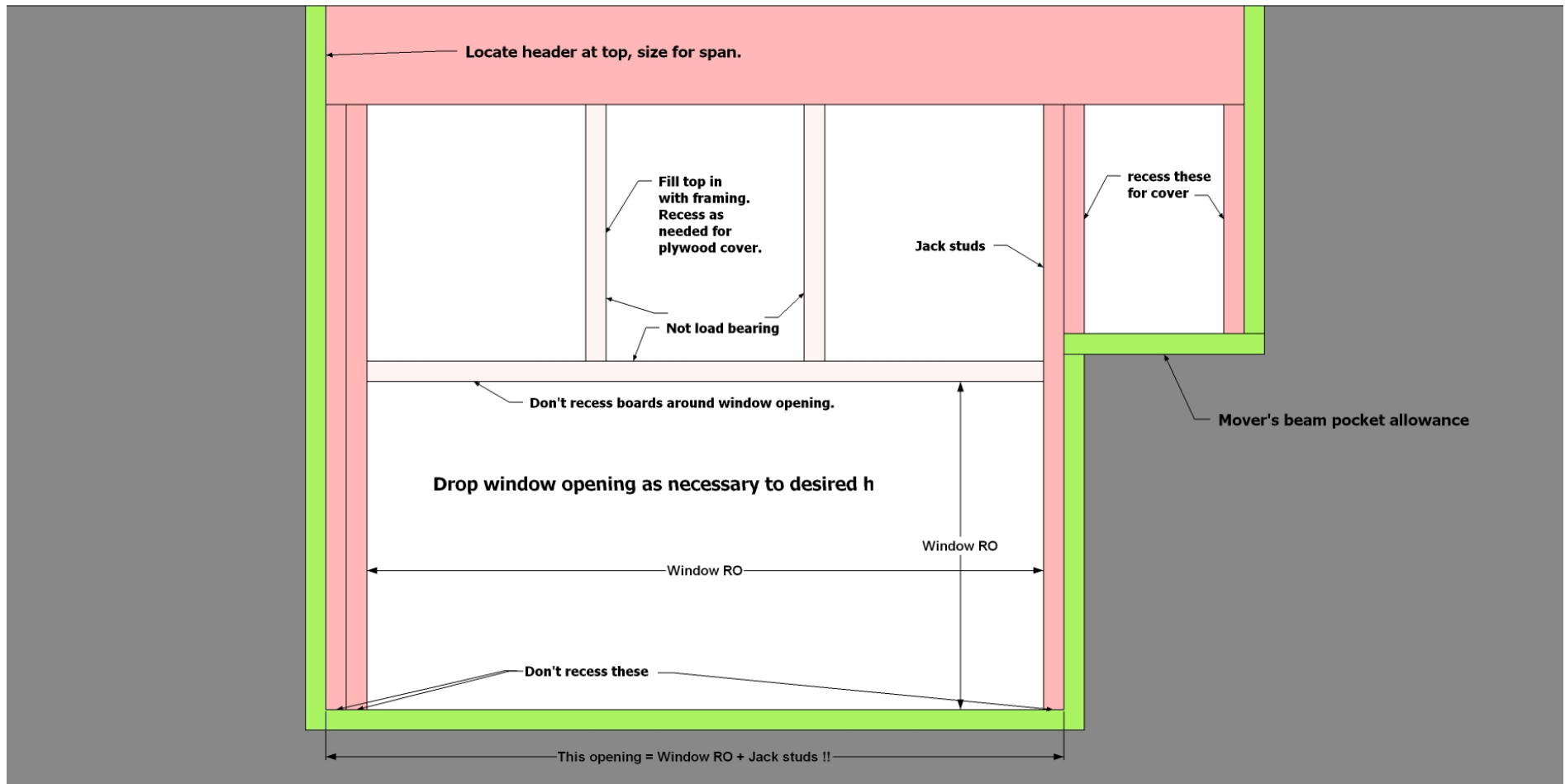


## Cover installation and fill in details (interior viewpoint)





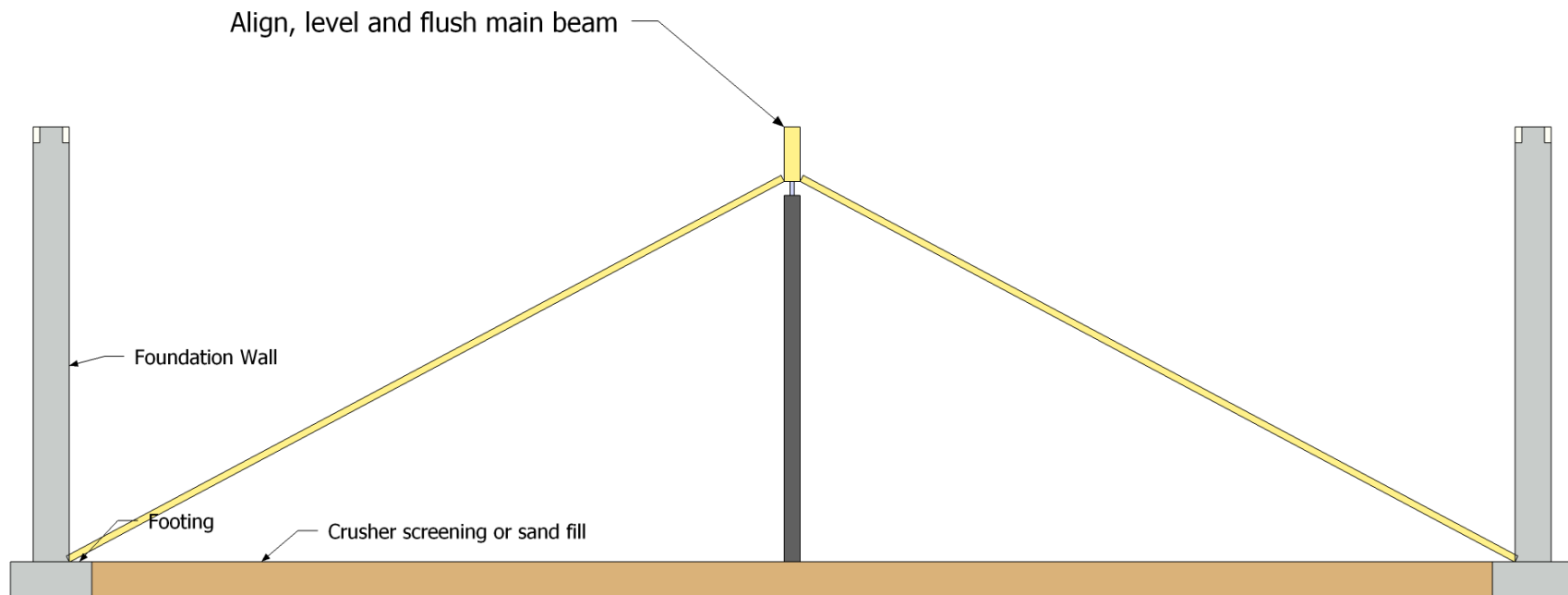
**Construction recommendation for dropped window. Also showing offset beam pocket if required.**





Main Beam bracing

## Beam Brace Detail End elevation cross section view



(c) 2011 Bilsborrow Building Movers Ltd.  
[www.bb mover.ca](http://www.bb mover.ca) 780-459-5933