



2023 – Classrooms for Sale

To inquire contact Sean at 780-459-5933

Document date 4/10/2023

Buildings

Available for purchase 4 portable classrooms and 1 vestibule/storage unit. Some units are in groups. All units can be purchased individually or in matching groups with others. No hallways will be included in the groups.

Over the years we have seen clients use these units as office space, housing, storage, private training facilities, work shops, etc. Although they will always require some work to become functional, most clients appreciate the equity in the unit and the speed and relatively low effort required to deploy and improve the unit to a status suitable for their needs. We normally sell out quickly each year and are please to be offering units again this year. If you are interested, please do not delay in contacting us.

Units were in service until the end of the spring 2023 school year, all units have an electrical sub panel and gas furnace.

Not included

- Exterior skirting, steps and landings are not included. (a few landings may be included)
- No contents are included. Some attached equipment shown may be removed and is not included such as white boards, fire equipment, electronic equipment, keys for locks etc.
- No blocking or foundations are included, if blocking is needed it can be purchased.

Move deadline

- Pre-selling all units now. Order now to secure your units. We sell out each year.
- Some units will be available for delivery in June 2023. Some units cannot be delivered until end of Sept, 2023

Expected expenses and Pricing notes

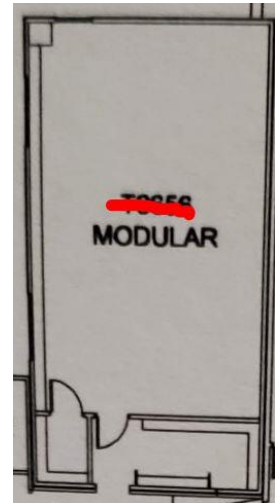
- Mover pays for all normal move expenses such as - city of Edmonton and provincial transportation permits, all route checks, sign relocation and traffic escorts within the city. Normally there are no costs associated with transportation permits outside of the city unless you have an unusual circumstance.
- If you are unable to take delivery on time then there maybe a \$30/day per unit storage fee.
- Customer is expected to warranty access into sites and on sites into foundation areas

- Pricing assumes a drive over placement (we must be able to drive or back into to foundation area to unload. Customer to provide foundation. Mover provides transport and setting of units only, no other work or services are provided. It is up to the client to obtain development and building permits and conduct the general work of project.
- Add the GST to all pricing.
- Pricing may be modified from time to time to reflect market demands.
- Deposits are required to place holds on units.

Layout

Normally classrooms have

- a clock room at the hall end and a small book/storage room at hall end
- furnace, electrical panel
- emergency exit door on far end
- will likely NOT have an entry door on the formerly hallway attached end
- The picture shown is a sample layout, layouts vary slightly between units (door locations vary, storage room may be on the left or right).



Other notes

- The covered exterior surfaces of the units facing other units may not be finished or likely finished differently then the exposed sides. In some cases, there are covered over windows.
- The hallway facing end of the unit will always be ugly once the hallway is demoed off. There are different finishes, maybe layers of finishes, cables hanging, remnants of wall/ceiling attachments etc. that will need to be cleaned up and the wall may require recovering. The area where the roof was attached to the hallway may require attention. The door opening will also only be covered with plywood and likely require weather protection as soon as it arrives to your site.
- In some cases, classrooms include exiting beams, however we cannot warranty their fitness for use.
- While we have made our best efforts to provide correct information, we cannot warranty accuracy of figures including but not limited to dimensions or year of build.
- All units are used and provided without warranty, as is – we cannot warranty the quality of the structures – customers are to provide their own inspections. Though the likelihood is low, we also have not inspected and cannot warranty that units do not contain hazardous materials such as asbestos (ie. they may have) – customers must accept the units as they are.
- All viewings must be made by appointment only. Do not contact schools directly to request viewing at any time. Do not go to outside unit locations during school operating hours, view only after 5pm weekdays and weekends and always notify us if you are viewing.

Listing L524a - #223 – (site StA)

Classroom, approx. 42' 6" Long x 22' 4" Wide x 11'8" tall, sitting on 8x8 timbers

Price \$30,000 plus GST includes delivery within 1.5 hours driving distance of south Edmonton.



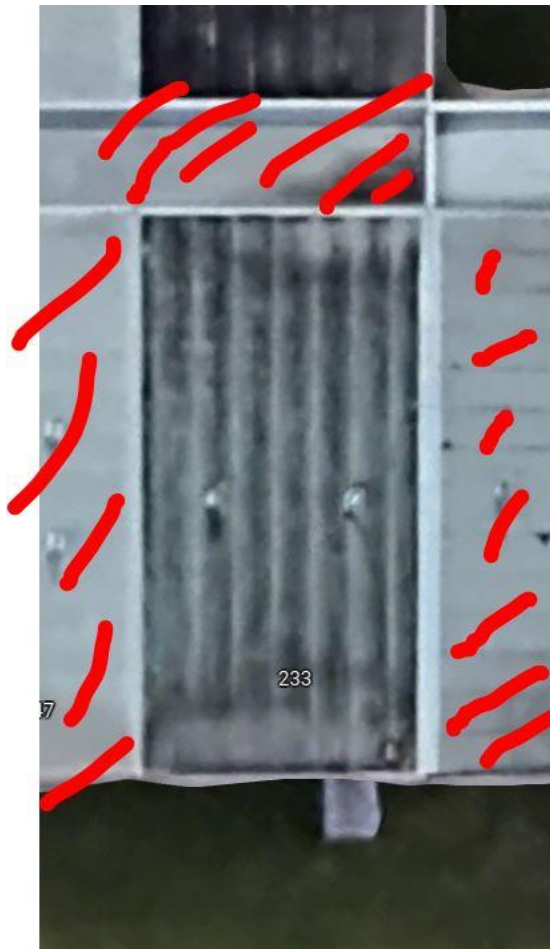


Listing L524b - #233 – (site StA)

Classroom, approx. 42' 6" Long x 22' 4" Wide x 11'8", tall sitting on 8x8 timbers

Price \$30,000 plus GST includes delivery within 1.5 hours driving distance of south Edmonton.



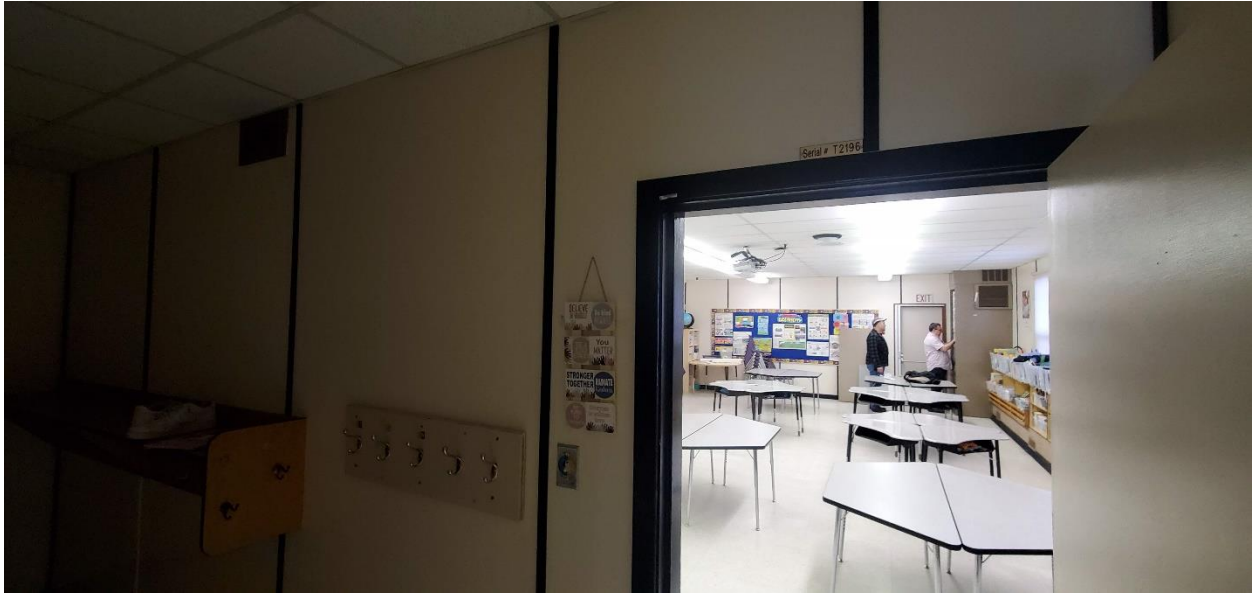


Listing L524c - #234 - **SOLD** – (site StA)

Classroom, approx. 42' 6" Long x 22' 4" Wide x 11'8" tall sitting on 8x8 timbers

Price **** SOLD **** plus GST includes delivery within 1.5 hours driving distance of south Edmonton.





Listing L524d - #81 - (site KT)

Classroom, approx. 48' Long x 22' 2" Wide x 13'4" tall, integrated frame support (this unit is longer!)

Price \$37,000 plus GST includes delivery within 1.5 hours driving distance of Edmonton.







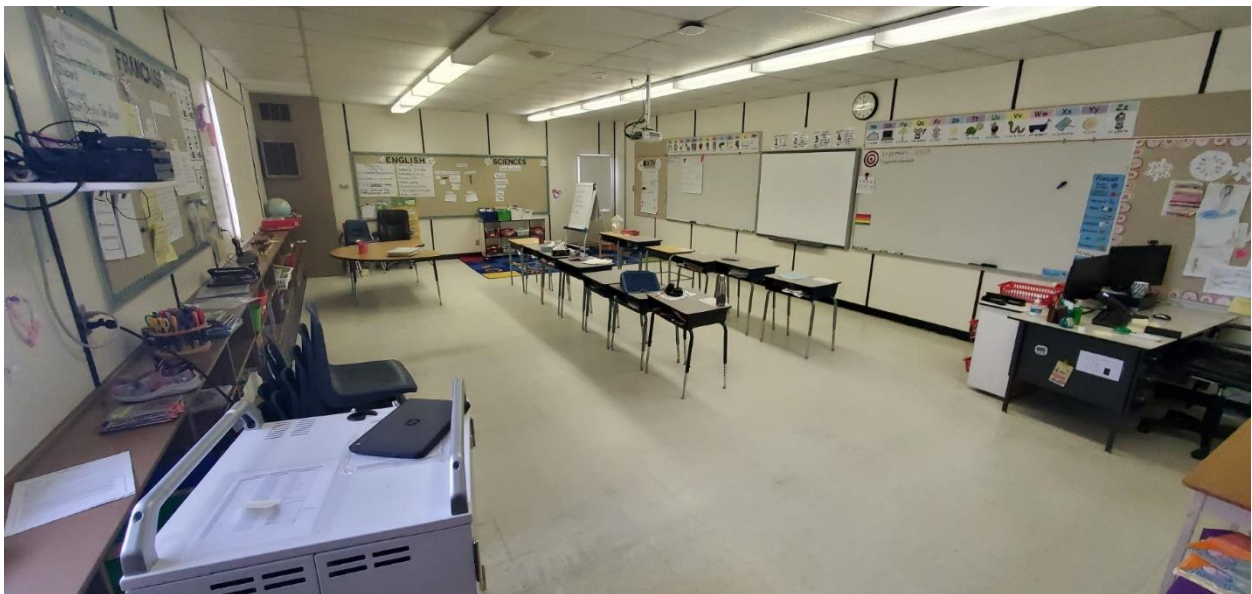


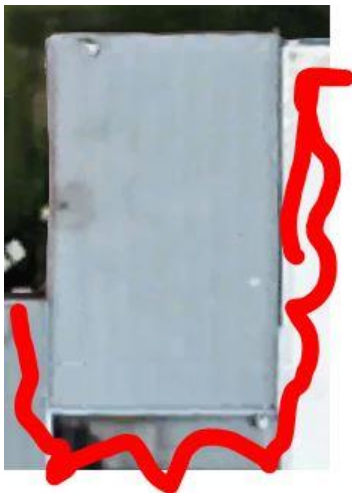
Listing L524e – Unit #66 - FLG

Classroom, approx. 42' Long x 22' Wide at base x 13'2" tall, has 24" eaves

****no apparent emergency exit door on this one ****

Price \$25,000 plus GST includes delivery within 1.5 hours driving distance of north Edmonton.





Listing L524f – Unit #C07 - FLG

Vestibule/Office/Storage - approx. 42' Long x 22' Wide at base x 13'2" tall has 24" eaves

This unit is serving as a vestibule (it has a hallway in the center with double exterior doors. On one side there is a mechanical room and a good size office with a closet. On the other side of the central hall there are two larger storage rooms (formerly washrooms) and a small storage room in the center. It would likely make a great site office building. Note there will be no doors on the side the joins the rest of the school and possibly no exterior finishing.

Price \$13,500 plus GST includes delivery within 1.5 hours driving distance of north Edmonton.



